

AGENDA

Meeting: MELKSHAM AREA BOARD
Place: Shaw School, Corsham Road, Shaw, Melksham SN12 8EQ
Date: Wednesday 9 March 2011
Time: 7.00 pm

Including the Parishes of Atworth, Broughton Gifford, Bulkington, Great Hinton, Keevil, Melksham, Melksham Without, Poulshot, Seend, Semington, Steeple Ashton.

The Area Board welcomes and invites contributions from members of the public. The chairman will try to ensure that everyone who wishes to speak will have the opportunity to do so.

If you have any requirements that would make your attendance at the meeting easier, please contact your Democratic Services Officer.

Refreshments and networking opportunities will be available from 6:30pm.

Please direct any enquiries on this Agenda to Kevin Fielding (Democratic Services Officer), on 01249 706612 or email kevin.fielding@wiltshire.gov.uk or Abbi Gutierrez (Melksham Community Area Manager), direct line 01225 718443 or (email) abbi.gutierrez@wiltshire.gov.uk

All the papers connected with this meeting are available on the Council's website at www.wiltshire.gov.uk

Press enquiries to Communications on direct lines (01225) 713114 / 713115.

Wiltshire Councillors

Cllr Jonathon Seed, Summerham and Seend (Chairman)
Cllr Rod Eaton, Melksham North (Vice Chairman)
Cllr Mark Griffiths, Melksham Without North

Cllr Jon Hubbard, Melksham South
Cllr Stephen Petty, Melksham Central
Cllr Roy While, Melksham Without South

Items to be considered	Time
<p>1. Chairman's Welcome, Introduction and Announcements <i>(Pages 3 - 6)</i></p> <p>(reports in pack where appropriate)</p> <ul style="list-style-type: none"> • Results of Waste consultation • Local flood protection (gel sacs) • Localism Bill • Childcare Sufficiency Assessment 2011 consultation <p>2. Apologies for Absence</p> <p>3. Declarations of Interest</p> <p>Councillors are requested to declare any personal or prejudicial interests or dispensations granted by the Standards Committee.</p> <p>4. Minutes <i>(Pages 7 - 20)</i></p> <p>To approve and sign as a correct record the minutes of the meeting held on 2 Feb 2011.</p>	<p>(7.00pm)</p>
<p>5. Partner Updates <i>(Pages 21 - 28)</i></p> <p>To receive updates from any of the following partners:</p> <ul style="list-style-type: none"> a. Community Area Partnership Representative b. Wiltshire Police c. Melksham CAYPIG d. Wiltshire Fire and Rescue Service e. NHS Wiltshire f. Melksham Town Council g. Parish Council Nominated Representatives 	<p>(7.05pm)</p>

- | | | |
|-----|---------------------------------------------------------------------------------------------------------------------------------------------------------------------------------------------------------------------------------------------------------------------------------------------------------------------------------------------------------------------------------------------------------------------------------------------------------------------------------------------------------------------|----------|
| 6. | <p>Update from young people on projects funded at special young people's area board (September 2010) (Pages 29 - 32)</p> <p>An update from young people on projects which were funded at the special young people's area board which was held last September at the Melksham Oak School.</p> <ul style="list-style-type: none"> • Project Parkour • Bus information cards • High ropes course • Subsidised bus travel • Minibus hire • Club Boom | (7.20pm) |
| 7. | <p>Emergency Planning</p> <p>Presentation by Nick Bate, (Emergency Planning Officer, Wiltshire Council) to endorse and promote the concept of local emergency plans.</p> | (7.30pm) |
| 8. | <p>Presentation of Draft Community Plan</p> <p>Chris Holden, (Melksham Community Area Partnership).</p> | (7.45pm) |
| 9. | <p>Community Flood Plans</p> <p>Cllr Jonathon Seed.</p> | (8.00pm) |
| 10. | <p>Update from Melksham Community Area Transport Group (CATG) (Pages 33 - 36)</p> <p>Cllr Jonathon Seed.</p> | (8.10pm) |
| 11. | <p>Any other urgent items of public concern</p> | (8.20pm) |
| 12. | <p>Grants (Pages 37 - 106)</p> <p>a. Community Grants Scheme</p> <p>Councillors will consider nine applications seeking 2010/2011 Community Area Grant Funding:</p> <ul style="list-style-type: none"> • Seend Parochial Church Council (£1556) towards a new printer for the Spotlight community magazine. | (8.30pm) |

- **Seend Trust & Community Centre** (£959) for good quality projection equipment.
- **Broughton Gifford Friendship Club** (£877) for trips for isolated older people.
- **West Wilts Interfaith Group** (£400) to hire an Indian artists and storyteller for the Melksham Festival of Food.
- **The Keevil Society** (£999) to purchase a marquee for use in the community.
- **Atworth Parish Council** (£900) towards redoing the stone kerbing on the village green to prevent erosion.
- **Poulshot Village Hall** (£2490) towards the upgrading of the kitchen to facilitate meal preparation and cleaning.
- **Melksham Without PC** (£467) towards the purchase of a large screen for viewing of plans.
- **Bowerhill Residents Action Group** (£500) towards an information board and details of circular walks in the new picnic area.

Copies of the completed application forms and grant application packs for the Community Area Grants Scheme are available from the Community Area Manager or electronically at

<http://www.wiltshire.gov.uk/areboardscommunitygrantsscheme.htm>

b. Councillor Initiated Projects

- Cllr Seed: **£3000** towards the creation of a lay-by near the canal, Spout Lane, Seend.
- Cllr Hubbard, **£1800** to run three positive parenting courses.

13. **Future Meeting Dates**

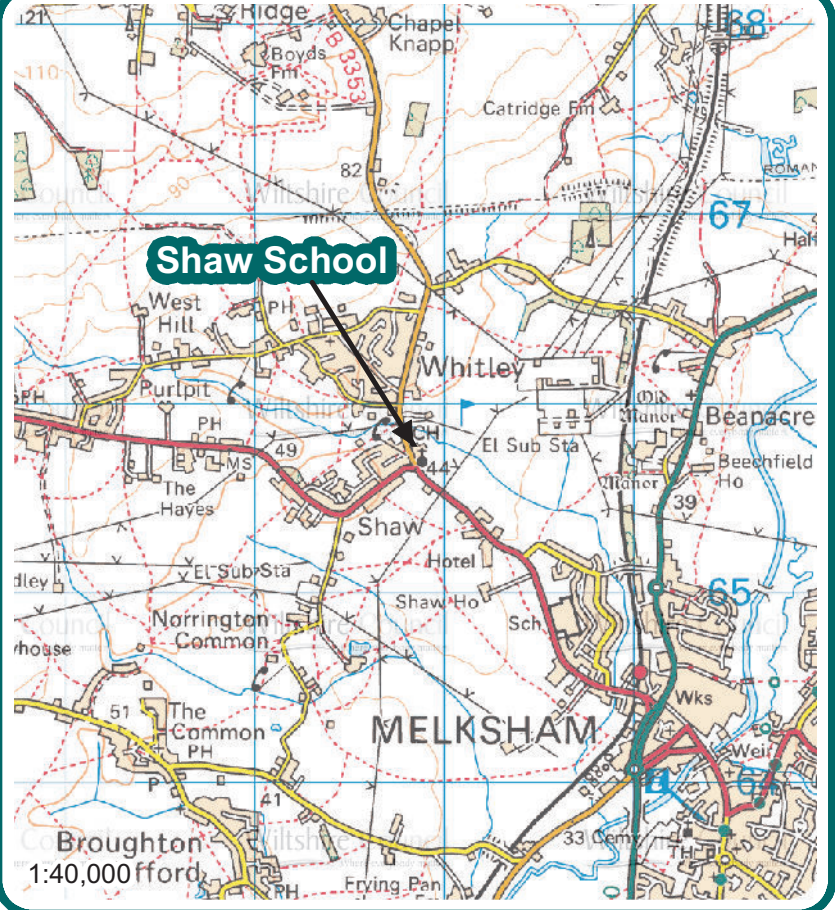
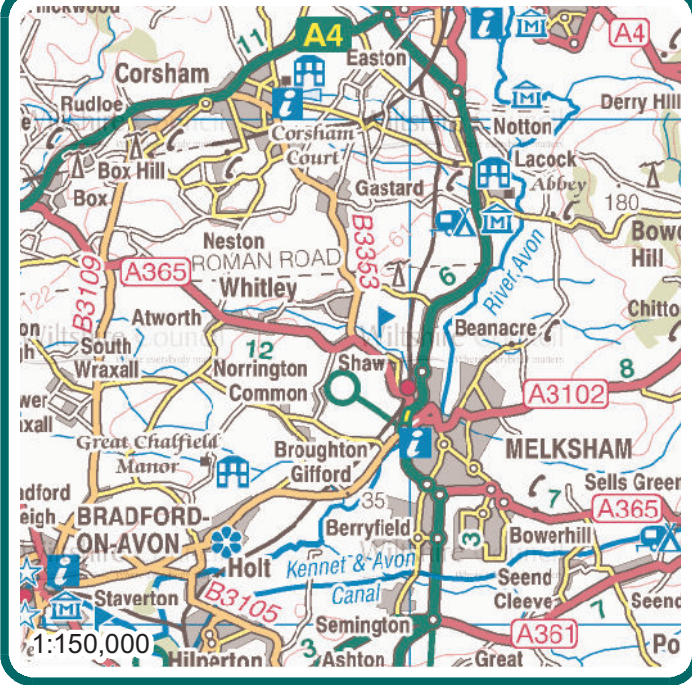
(8.55pm)

Tues 29 March 2011 – Melksham Assembly Hall (campus discussions)

Thurs 12 May 2011 – Melksham Oak school

14. **Evaluation & Close**

(9.00pm)



Shaw School
Corsham Road
Shaw
Melksham
SN12 8EQ



 Where everybody matters



Melksham Area Board 9 March 2011

Chairman's Announcements

Waste Consultation Results

Those of you who attended area boards during the summer will recall the presentations about the council's proposal for changes to Wiltshire's Waste collection and recycling service.

The consultation finished on 20 August 2010. We would like to thank all the area boards for their support throughout the consultation period.

There is a report on the full results of the consultation that can be seen on

<http://www.intelligencenetwork.org.uk/environment/> . There is a link from the council website. Or if preferred, hard copies can be made available.

In brief over 10,000 people responded and just over 70% were in favour of the proposal. However the results show that support was varied across the county, with some areas showing a lower level of support.

A report on the consultation was considered by cabinet on 19 October 2010. Cabinet resolved to go ahead with the proposal, subject to the detail in the Comprehensive Spending Review. In approving the proposal cabinet acknowledged that support levels varied and that major and targeted communications will be essential to inform and reassure those residents that have concerns.

The proposed service changes are planned for **Autumn** 2011, and residents will be kept informed throughout the process. We envisage that as with the consultation the area boards will be asked to once again assist us in providing key messages in their areas, to this end we will be putting together an area board communications plan for the service change roll out to ensure messages are timely and relevant for each area board, we will share this with you all in due course.

Local Flood Protection

In the event of flooding the Council's priority is to the elderly or infirm when assisting people and the protection of commercial property to prevent environmental pollution. Although we will do what we can for affected householders we urge those in areas of risk to take precautions themselves.

In order to help communities protect themselves from flood risk, Wiltshire Council is introducing a scheme to supply gel sacs, these are similar to sandbags but inflate when in contact with water. The sacs are filled with a gel that expands when wet, but when dry they are virtually flat. This means they are simple to store and far easier to distribute in an emergency. They inflate when immersed in water, allowing a protective flood barrier to be built quickly to protect doorways and airbricks. When the flood has abated they can often be emptied, dried and reused.

In some places where there is a known flood risk, the Parish or Town Council may already hold a limited supply of sandbags for distribution in times of emergency, and the gel sacs can be used to augment these supplies.

Local communities are encouraged to appoint a local Flood Warden who can co-ordinate their response and be the main contact with the council's duty officers. Those parish and town councils with flood wardens or local flood working groups can seek advice from them on the numbers of gel sacs likely to be required for specific locations.

Parish and Town Councils will be able to:

- Purchase a stock which they can hold in the community for distribution during a flood event or
- Having identified properties that are at risk, or are known to flood, purchase the gel sacs on behalf of the householders

By buying in bulk Wiltshire Council was able to negotiate a discount which would not be available to individuals. The gel sacs are available to Parish and Town Councils for £2.50 each.

Town and Parish Council's wishing purchase gel sacs should complete and email the attached form to Sarah Peterson (sarah.peterson@wiltshire.gov.uk, telephone 01225 713377)

Localism Bill - Proposed Changes to Arrangements Governing the Conduct of Councillors

The Government's Localism Bill, published on 13 December 2010, makes significant changes to the current arrangements governing the conduct of councillors in Wiltshire. The proposals in the Bill include:

- removing the requirement for councils to adopt a national code of conduct for councillors;
- abolishing Standards for England, the national body responsible for overseeing the current standards regime in England;
- introducing new arrangements for the registration and declaration of personal interests, backed by the criminal law;
- giving councils a duty to promote and maintain high standards of conduct by councillors;
- enabling councils to adopt a voluntary code of conduct.

Councils, including unitary, town, parish and city councils will be expected to establish a committee to oversee the council's arrangements for promoting and maintaining high standards of conduct.

We will be monitoring the Localism Bill as it proceeds through Parliament. The Bill is expected to become law in the Autumn 2011. Further details on the arrangements will be provided in regulations.

In the meantime the current arrangements for standards, including the local assessment, consideration and determination of complaints under the model code of conduct adopted by councils, will continue to apply. We anticipate that the new arrangements will not come into effect until the Spring 2012.

We will be providing updates on the progress of this legislation to towns, parish and city councils.

If you need any further information on this matter please contact:

Ian Gibbons, Solicitor to the Council and Monitoring Officer
01225 713052 E-mail ian.gibbons@wiltshire.gov.uk; or

Nina Wilton, Head of Governance and Deputy Monitoring Officer
01225 713078 E-mail nina.wilton@wiltshire.gov.uk

Childcare Sufficiency Assessment

Local authorities have a duty, under the Childcare Act 2006, to assess the sufficiency of childcare in their area and produce a report. Wiltshire's second report has now been drafted and it is out for consultation on the Wiltshire Council website: <http://www.wiltshire.gov.uk/schoolseducationandlearning/earlyyearsandchildcare/childcaresufficiencyassessment.htm>.

Any comments should be forwarded to the early years team using the response sheet provided on the website by 20 March 2011. The final report will be published on the website before 1 April 2011.

Further information is available from:
Email: earlyyears@wiltshire.gov.uk
Telephone: 01225 785674

MINUTES

Meeting: MELKSHAM AREA BOARD
Place: Melksham Oak Community School, Devizes Road, Bowerhill,
Melksham, SN12 6Q
Date: 2 February 2011
Start Time: 7.00pm
Finish Time: 9.10pm

Please direct any enquiries on these minutes to:

Kevin Fielding (Democratic Services Officer), Tel: 01249 706612 or (e-mail) kevin.fielding@wiltshire.gov.uk

Papers available on the Council's website at www.wiltshire.gov.uk

In Attendance:

Wiltshire Councillors

Cllr Jonathon Seed (Chairman), Cllr Rod Eaton (Vice Chairman), Cllr Jon Hubbard, Cllr Stephen Petty and Cllr Roy While

Cabinet Representative

Cllr John Thomson - Adult Care, Communities and Libraries

Wiltshire Council Officers

Abbi Gutierrez – Community Area Manager
Kevin Fielding – Democratic Services Officer
Niki Lewis – Service Director
Lucy Murray-Brown - Leisure Partnerships Manager
Mark Stone - Transformation Programme Director
Allan Creedy - Head of Service - Sustainable Transport
David Thomas – Traffic Engineering Manager
Judi Gardner - Communications

Town and Parish Councillors

Melksham Town Council – Chris Petty & Terry Welch
Atworth Parish Council – Charles Boyle
Bulkington Parish Council – Sally Oliphant
Keevil Parish Council – Jerry Wickham

Melksham Without Parish Council – Mike Mills & John Glover
Seend Parish Council – Thelma Carr
Semington Parish Council – Ron Robinson & Paul Bowyer

Partners

Wiltshire Police – Inspector David Cullop & Chief Constable Brian Moore
Angus McPherson - Wiltshire Police Authority
Melksham Community Area Partnership – Chris Holden & Colin Goodhind
CAYPIG – Sarah Howes

Members of Public in Attendance: 32

Total in attendance: 91

<u>Agenda Item No.</u>	<u>Summary of Issues Discussed and Decision</u>	<u>Action By</u>
91.	<p><u>Chairman's Welcome, Introduction and Announcements</u></p> <p>The Chairman welcomed everyone to Melksham Oak School. The Chairman then introduced the Wiltshire councillors who made up the area board and Cllr John Thomson (Cabinet member for Adult Care, Communities and Libraries), who was attending the meeting to introduce his portfolio and take any questions, and Brian Moore (Chief Constable, Wiltshire Police).</p> <p>The following Chairman's announcements contained in the pack were noted:</p> <ul style="list-style-type: none"> • Dog Control Orders. • Street Trading Consultation. 	
92.	<p><u>Apologies for Absence</u></p> <p>Apologies were received from Cllr Jane Scott OBE and Cllr Mark Griffiths.</p>	
93.	<p><u>Declarations of Interest</u></p> <p>Agenda Item No.10 Community Area Grant – Melksham Town Council. Cllr Rod Eaton – Prejudicial interest, member of Melksham Town Council, would leave the room when this application was discussed and voted on.</p> <p>Agenda Item No.10 Community Area Grant – Happy Circle Day Centre. Cllr Jon Hubbard – Personal interest, had supported and attended events arranged by the applicant.</p> <p>Agenda Item No.10 Community Area Grant – Melksham Town Council. Cllr Jon Hubbard – Prejudicial interest, member of Melksham Town Council, would leave the room when this application was discussed and voted on.</p>	

94.	<p><u>Minutes</u></p> <p>The minutes of the meeting on 1 December 2010 were approved and signed as a correct record.</p> <p>Joan Savage (Seend Parish Council) asked when the community area grant application for Seend Parochial Church Council's new printer for the Spotlight community magazine would be discussed. She was advised by the Chairman that this application would be included on the 9 March 2011 Area Board agenda.</p>	
95.	<p><u>Partner Updates</u></p> <p>The Chairman advised that in order to give as much time as possible to the presentation of the outcome of leisure review and options for the Melksham Community Campus the partner updates would be kept as brief as possible.</p> <p>Melksham CAYPIG (Young People's Issues Group) CAYPIG representatives advised that:</p> <ul style="list-style-type: none"> • The next CAYPIG meeting would be held on Wednesday, 9 February 2011 where the area board funding projects would be discussed. <p>Wiltshire Police Authority Angus McPherson - Wiltshire Police Authority gave a short power point presentation on the potential impact of the spending cuts on Wiltshire policing.</p> <p>Points made included:</p> <ul style="list-style-type: none"> • Wiltshire Police Authority's annual budget of £107 million must be reduced by £15 million over the next four years to meet government spending cuts. • Wiltshire Police was likely to lose up to 150 police officers and up to 200 police staff posts, but were committed to keeping officers on the streets and protecting the frontline as far as possible. • Numbers of neighbourhood police would remain the same. • New technology would keep officers on the beat fighting crime. 	

- Current helicopter arrangements with the air ambulance would continue until at least 2014.
- The Swindon and County divisional structures would be merged.
- Wiltshire Police Authority had compiled a questionnaire for the residents of Wiltshire to give their input as to funding cuts.

Questions from the floor included:

- How will Wiltshire Police maintain the same level of cover if they are losing 150 police officers?
A. The reduction will be through natural wastage, Wiltshire police are currently not recruiting any new officers, back office staff will bare the brunt of the cuts.
- What is happening with regard to the air ambulance arrangements after 2014?
A. Detailed discussions had yet to take place on this.
- Concerns had been raised as to the Chief Constable's comments on the knife incident that had occurred recently in the town centre. A lot of positive work was happening between young people and the police in the community area.
A. The Chief Constable felt that many positive points had been made by him after the incident, a lot of good youth policing was going on in and around Melksham, but that parents had to buy into what the police and partner agencies were trying to achieve.
- It was noted how well valued the PCSO's had become throughout the community area.

The Chairman thanked Angus McPherson and the Chief Constable for the presentation and question and answer session.

Wiltshire Police

The written update distributed with the agenda was noted.

	<p>Community Area Partnership The written update distributed with the agenda was noted.</p> <p>Wiltshire Fire and Rescue Service The written update distributed with the agenda was noted.</p> <p>NHS Wiltshire The written update distributed with the agenda was noted.</p>	
96.	<p><u>Presentation of outcome of leisure review and options for Melksham Community Campus, followed by any points of clarification</u></p> <p>Lucy Murray-Brown (Campus & Operational Estate Management Lead, Wiltshire Council) outlined the Melksham Community Campus options.</p> <p>Attendees were provided with information packs and a power point presentation was used to highlight the proposals, the Chairman made the point that the information given in the presentation and the information pack should be taken away, digested and that any questions attendees had should be brought up at the Special Campus Area Board meeting at the Melksham Assembly Hall on the 29 March.</p> <p>The power point presentation is attached to these minutes.</p> <p>Points of clarification raised included:</p> <ul style="list-style-type: none"> • Where are the costed proposals for all of the sites? <i>A. In the information packs.</i> • Will car parking at the campus be free? <i>A. Recommendations are that parking should be free, although a decision had yet to be made.</i> • Concerns about pupil safety if Melksham Oak School shared facilities with the leisure campus. 	

	<p>A. <i>Dual use sites are operating across the county with no issues reported.</i></p> <ul style="list-style-type: none"> • Who will have access to the desk space at the campus? <p>A. <i>Wiltshire Council and other public sector staff, voluntary/community organisations and the public.</i></p> <ul style="list-style-type: none"> • Will Wiltshire Council be canvassing the views of Trowbridge and Devizes residents who may use the leisure facilities? <p>A. <i>The campus is for the Melksham community, it is their views that we want.</i></p> <ul style="list-style-type: none"> • Have Wiltshire Council looked at the experiences of other authorities? <p>A. <i>Yes, Wiltshire Council has.</i></p> <ul style="list-style-type: none"> • Would Wiltshire Council listen to the views of Melksham residents if they wanted a different campus site to the one recommended by Wiltshire Council? <p>A. <i>The Melksham Area Board will make the decision as they represent the community area, this decision will be a considered decision that will take on board the residents views.</i></p> <ul style="list-style-type: none"> • How much is the campus expected to cost? <p>A. <i>Around 23 Million pounds.</i></p> <ul style="list-style-type: none"> • Was the Melksham Library recently refurbished? <p>A. <i>The library was refurbished about five years ago, this work did not include the roof. A condition survey of the library and other buildings will be available on the council's website with</i></p>	
--	---------------------------------------------------------------------------------------------------------------------------------------------------------------------------------------------------------------------------------------------------------------------------------------------------------------------------------------------------------------------------------------------------------------------------------------------------------------------------------------------------------------------------------------------------------------------------------------------------------------------------------------------------------------------------------------------------------------------------------------------------------------------------------------------------------------------------------------------------------------------------------------------------------------------------------------------------------------------------------------------------------------------------------------------------------------------------------------------------------------------------------------------------------------------------------------------------------------------------------------------------------------------------------------------------------------------------------------------------------------------------------------------------------------------------------------------------------------------------------------------------------------------------------------------------------------------------------------------------------------------------------------	--

	<p><i>full details.</i></p> <p>The Chairman thanked Lucy Murray-Brown for her presentation and once again encouraged all present to read the information provided and play their part in feeding in to the decision making process.</p>	
97.	<p><u>Ensuring all voices are heard - campus consultation</u></p> <p>Chris Holden (Chairman - Melksham Community Area Partnership) outlined who the partnership were and how they would ensure everyone's voices could feed into the campus consultation.</p> <p>The following points were made by Chris Holden:</p> <ul style="list-style-type: none"> • Community Area Partnerships are independent and open, and are set up to represent the views of the community to Wiltshire Council. • The Partnership had been asked to work with the Area Board to consult on the proposals for the Service Campus and would be doing the following: <ol style="list-style-type: none"> 1. Questionnaire available mid February - deadline 22 March, distributed to 13,000 households in the Area. 2. Open Days/Evening <ul style="list-style-type: none"> Sat 12 February - OPEN DAY, Melksham Town Hall, 1pm - 5pm. Thursday 3 March - OPEN EVENING, Melksham Assembly Hall, 6pm - 8pm. Saturday 12 March - OPEN DAY - Melksham Town Hall, 10am - 1pm. 3. Permanent Displays <ul style="list-style-type: none"> Information on display with questionnaires available at the Library, Town Hall and an empty Shop (Church St). 	

	<p>4. Meetings with local groups to discuss the campus proposals.</p> <p>5. Compiling Results. Results will be presented back at the Area Board Meeting on 29 March at Melksham Assembly Hall.</p>	
98.	<p><u>Your Community Issues</u></p> <p>A request was made by Mike Dodd (Vice-Chair, Great Hinton Parish Council) that the Area Board supports Great Hinton Parish Council in seeking changes to traffic management at the junction of the A361 and C232 at “The Strand”.</p> <p>Decision</p> <ul style="list-style-type: none"> • The Melksham Area Board supports Great Hinton Parish Council in seeking changes to traffic management at the junction of the A361 and C232 at “The Strand” to improve the safety of traffic turning right into the C232 and exiting right from the C232, and urges the Highway Department of Wiltshire Council to take the action Requested by Great Hinton Parish Council. <p>The Chairman thanked Mike Dodd and Broad Hinton Parish council for their request to the Area Board.</p>	
99.	<p><u>Any other urgent items of public concern.</u></p> <p>i. Cllr Chris Petty (Melksham Town Council) – advised that Melksham traders had raised concerns over the length of time it was taking to renew the pavements in Church Street, Melksham.</p> <p>Alan Creedy (Head of Service - Sustainable Transport, Wiltshire Council) and (David Thomas Traffic Engineering Manager, Wiltshire Council) were on hand to answer any question that were raised.</p> <p>David Thomas advised that:</p> <ul style="list-style-type: none"> • Melksham Market Place would not be closed due to the works to keep disruption to a minimum, although this would mean that the work would take longer. 	

- The method of work was to renew 10-15 metre sections of pavement at one time, this caused minimum disruption to traders, pedestrians and drivers.

Questions raised from the floor included:

- Could Wiltshire Council not close the road and do the work over a weekend?
 - A. Using larger teams and working on Saturdays could be considered.
- Are there any public accessible plans available for the works that are currently being carried out?
 - A. Detailed information will be covered in a newsletter for local traders and also on the Wiltshire Council website, Melksham Library will also be given the plans to display.

**Allan
Creedy/
David
Thomas**

The Chairman thanked Cllr Petty and Allan Creedy for their input.

ii. Melksham Choral Society

Richard Slingsby thanked the Area Board members for the community area grant that the society had been granted, the Board were also advised by Mr Slingsby that the Melksham Choral Society were happy to return £314 which they hadn't spent from the grant.

The Chairman thanked Richard Slingsby for the update.

iii. Flooding – A3102

Recent issues with flooding at the housing Development at Snarlton Lane/Sandridge Hill had now been resolved after developers were served notice that drainage pipes were inadequate, a pump had now been installed to pump any future flood water into the Clackers Brook.

100.	<p><u>Grants</u></p> <p>Community Area Grant Scheme</p> <p>The Wiltshire Councillors considered three applications to the Community Area Grants Scheme 2010/11, as follows:</p> <p>Melksham Tennis Club awarded £1095 towards the installation of floodlights on the two all weather courts at Melksham Tennis Club. Note: This grant was awarded subject to planning to a planning application being granted.</p> <p><i>Reason</i> <i>The above application met the Community Area Grant criteria for 2010/11 and demonstrates a link to the Melksham community plan.</i></p> <p>Happy Circle Day Centre awarded £985 for a series of trips and activities for day centre members (older people living independently).</p> <p><i>Reason</i> <i>The above application met the Community Area Grant criteria for 2010/11 and demonstrates a link to the Melksham community plan.</i></p> <p>Note Cllrs Eaton and Hubbard leave the room.</p> <p>Melksham Town Council applied for £ £1447 to promote and market the new cinema offering within Melksham Assembly Hall. They were awarded £500 by the Area Board to support the advertising costs of this venture.</p> <p><i>Reason</i> <i>The Area Board members agreed that £500 was sufficient to support the advertising costs of this application.</i></p> <p>Performance Reward Grant Scheme</p> <p>The Wiltshire Councillors considered two bids to the Performance Reward Grant Scheme, as follows:</p> <p>Note Cllr Eaton was out of the room and did not vote on this application.</p>	
------	-------------------------------------------------------------------------------------------------------------------------------------------------------------------------------------------------------------------------------------------------------------------------------------------------------------------------------------------------------------------------------------------------------------------------------------------------------------------------------------------------------------------------------------------------------------------------------------------------------------------------------------------------------------------------------------------------------------------------------------------------------------------------------------------------------------------------------------------------------------------------------------------------------------------------------------------------------------------------------------------------------------------------------------------------------------------------------------------------------------------------------------------------------------------------------------------------------------------------------------------------------------------------------------------------------------------------------------------------------------------------------------------------------------------------------------------------------------------------------------------------------------------------------------------------------------------------------------------------------------------------------	--

The new Wiltshire Infrastructure Support Service – ‘GROW’ *Enhancing Community Support* includes a countywide Volunteer Service for Wiltshire for the first time. This application, if approved, would both build on the basic service and develop an accredited volunteer centre for Wiltshire. At present the nearest accredited centre is in Swindon. The proposed service would offer the six core functions of a Volunteer Centre as prescribed by Volunteering England. The benefits to all community areas in Wiltshire will include better access to volunteering opportunities and support to individuals, Employer Volunteering scheme, specialised support, information and good practice services, access to draw down further funding via Volunteering England to support volunteering, and access to support and information as part of a national framework.

Decision

- **The Melksham Area Board supports the “Grow” application.**

Cllr Eaton now back in the room.

TransWilts Rail

Presentation by Paul Johnson (Chairman, Knorr-Bremse and Chairman, Wessex Association of Chambers of Commerce Transport Policy Group).

Who requested that the Area Board support a grant of £20,000 for an additional strategic rail service across Wiltshire.

The provision of an appropriate additional rail service linking the major towns of Wiltshire (Salisbury - Warminster - Westbury - Trowbridge - Melksham - Chippenham and on to Swindon) would provide a major economic stimulus for the towns along the route, connecting the communities to each other by fast public transport and relieving road pressures, and also providing better links into and out of the area, and through the new proposed LEP region with Swindon up to Gloucester and Cheltenham.

This application has significant support from the business community illustrated by the proactive involvement of Wessex Association of Chambers of Commerce.

	<p>Decision</p> <ul style="list-style-type: none"> • The Melksham Area Board supports the TransWilts Rail application. <p>Feedback from Semington Football Club who were awarded £24,000 in 2010.</p> <p>Kevin Lockwood thanked the Area Board for endorsing the application, he then advised that everything was now in place for Semington football club to begin using the site and its facilities from September 2011.</p>	
101.	<p><u>Cabinet Member Questions</u></p> <p>Cllr John Thomson (Cabinet member for Adult Care, Communities and Libraries), who was attending the meeting to introduce his portfolio and take any questions on behalf of Cllr Jane Scott, (Leader - Wiltshire Council) who was unable to attend the meeting.</p> <p>It was agreed that as the meeting had over ran its end time of 9pm Cllr Thomson would come back to a future meeting to introduce his portfolio and take questions.</p>	
102.	<p><u>Future Meeting Dates</u></p> <p>The Chairman highlighted the forthcoming meetings and drew particular attention to Wednesday 9 March which would be for routine business and Tuesday 29 March for the Campus discussion and debate.</p>	
103.	<p><u>Evaluation & Close</u></p> <p>The Chairman thanked everybody for attending the meeting.</p>	



**Crime and Community Safety Briefing Paper
Melksham Community Area Board
9th March 2011**

1. Inspector Cullop is on annual leave and sends his apologies. Sergeant Mel Rolph will be in attendance to present this report and answer any questions from members and the public.

2. Neighbourhood Policing

Regular engagement and consultation is a key area of Neighbourhood Policing. Details of all consultations meetings can be found on the Wiltshire Police Website <http://www.wiltshire.police.uk>

Team profile:

Team Supervisor

Sergeant Mel Rolph

Town Centre Team

Beat Manager – PC Kane Fulbrook-Smith

Patrol Officer – Sophie Dodd

PCSO – Debbie Huntley

PCSO – Helen Wilson

PCSO – Christopher Pugh

Rural North Team

Beat Manager – PC Barry Dalton

PCSO – Janet Gould

PCSO - Maggie Ledbury

Rural South Team

Beat Manager – PC Emily Thomas

PCSO Rose Baldock

Team News:

There have been no changes to the Team since the last Area Board.

Current Priorities:

Up-to-date details of the current news about Neighbourhood Policing Teams, including, profiles, priorities and forthcoming community consultation events can be found on our Wiltshire Police Website, which has had a new make-over to make it more assessable for users.

☐ Visit the new and improved website at: www.wiltshire.police.uk

Police Authority Representative:

Mr Angus Macpherson

Mr Macpherson can be contacted via Wiltshire Police Authority:

☎ 01380 734022

🌐 <http://www.wiltshire-pa.gov.uk/feedback.asp>

3. Comprehensive Spending Review

Work is ongoing to deliver a new policing model to meet the projected funding cuts over the next 4-years. The public consultation phase has been completed. Details of any changes to local policing delivery in Melksham will be reported to the Area Board as soon as they become known.

4. Performance

The reported overall crime figures continue to show that offences in the Community Area are falling. The **14.5%** reduction is the third best across the county. Crime is down in all categories apart from the theft of motor vehicles where there is an increase of 4 against target.

Following the introduction of Local Resolution there will be a decrease in offences that are recorded as sanctioned detections or in other words offences that are finalised with a Criminal Justice outcome. Local Resolution brings back a common-sense approach to dealing with minor crimes and anti-social behaviour by putting the victim's wishes first. In many cases victims only want an offender to apologise to them or agree to reparation. This approach fits well with the use of Restorative Justice Practices where offenders are made to understand the impact of their behaviour and in many cases undertake work within their community.

**Table 1 – Reported Crime Figures Melksham Community Area
1st Feb 2010 – 31st Jan 2011**

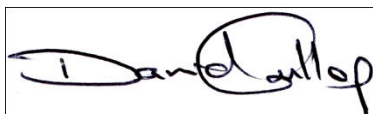
MELKSHAM	CRIME				DETECTIONS	
	2009/10	2010/11	+ / -	% Change	2009/10	2010/11
Violence Against the Person	263	236	-27	-10.3%	52.5%	55.1%
Dwelling Burglary	118	53	-65	-55.1%	38.1%	18.9%
Criminal Damage	277	232	-45	-16.2%	25.6%	21.6%
Non Dwelling Burglary	110	88	-22	-20.0%	3.6%	10.2%
Theft from Motor Vehicle	87	68	-19	-21.8%	5.7%	0.0%
Theft of Motor Vehicle	20	24	4	20.0%	20.0%	12.5%
Total Crime	1335	1141	-194	-14.5%	30.9%	26.6%

NPT officers are still concentrating on reducing ASB in and around King George V Park and have recently introduced a drop-in surgery in partnership with Selwood Housing. The initiative has the support of the Forest area Tenants and Residents Association. A key part of this work is to continue to engage with young people to encourage them to join activities run by the Youth Development Service. The Bluz 'n' Zuz initiative continues to be well supported.

There is evidence to support that an increase in reports during December is due to the weather and persons reporting snowballing incidents. Officers have adopted a common-sense approach and have only pursued incidents where there are other factors to suggest an intent to cause harm to another person or property.

**Table 2 – Reported Anti-Social Behaviour Figures
1st Jan 2010 – 31st December 2010**

JAN-MAR 2010	APR-JUNE 2010 (2009)	JULY- SEPT 2010 (2009)	OCT – DEC 2010 (2009)	MONTHLY AVE
238	308 (368)	369 (308)	307 (259)	305.5



David W Cullop
Sector Inspector

21/02/11



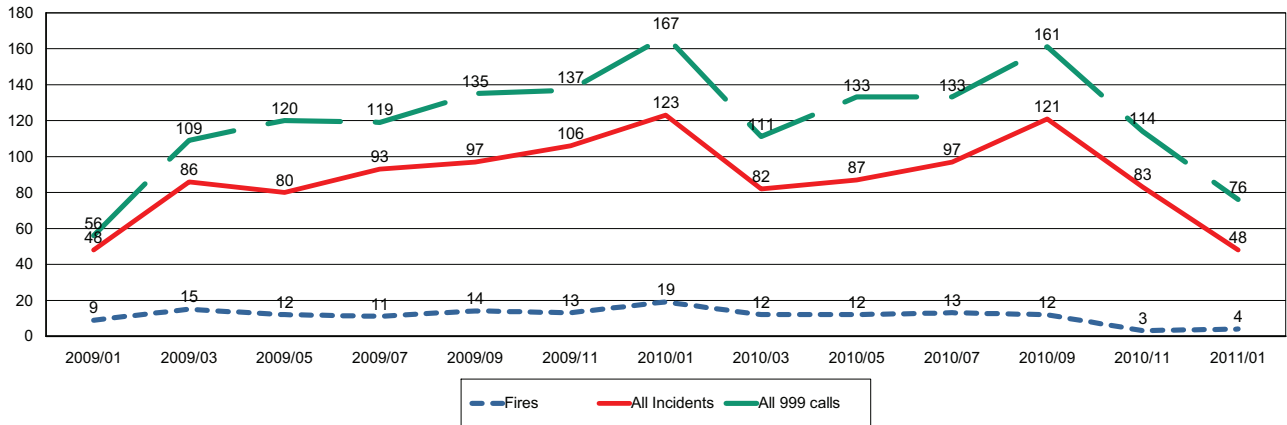
Wiltshire Fire & Rescue Service

Wiltshire and Swindon Fire Authority

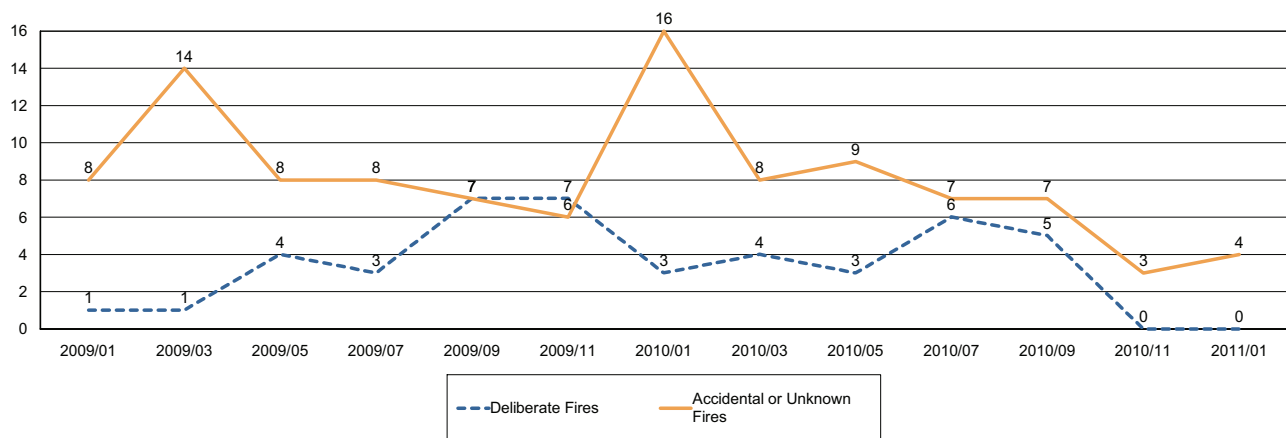
Report for Melksham Area Board

The following is a bi-monthly update of Fire and Rescue Service activity up to and including January 2011. It has been prepared by the Group Manager for the Board's area.

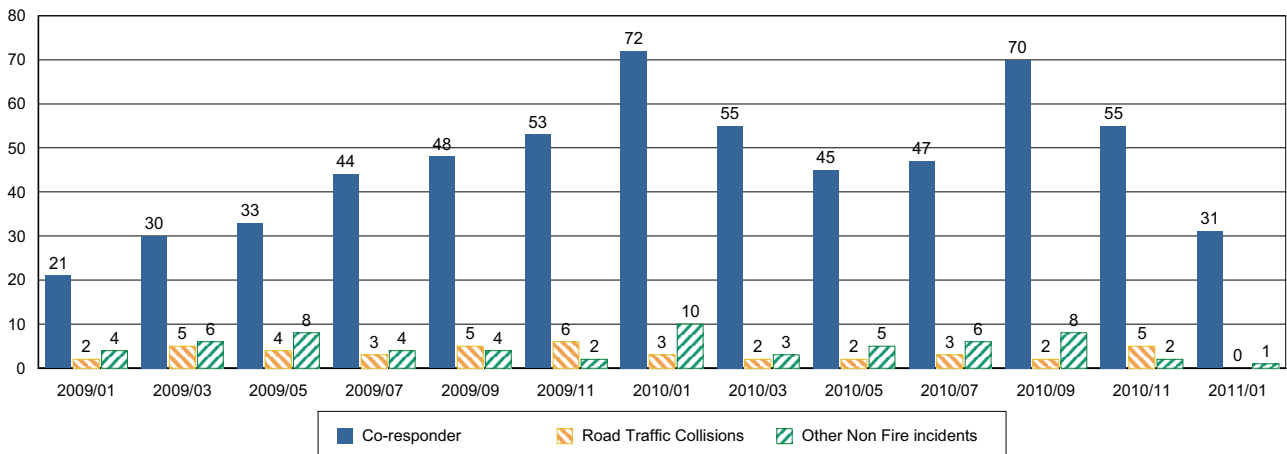
Incidents and Calls



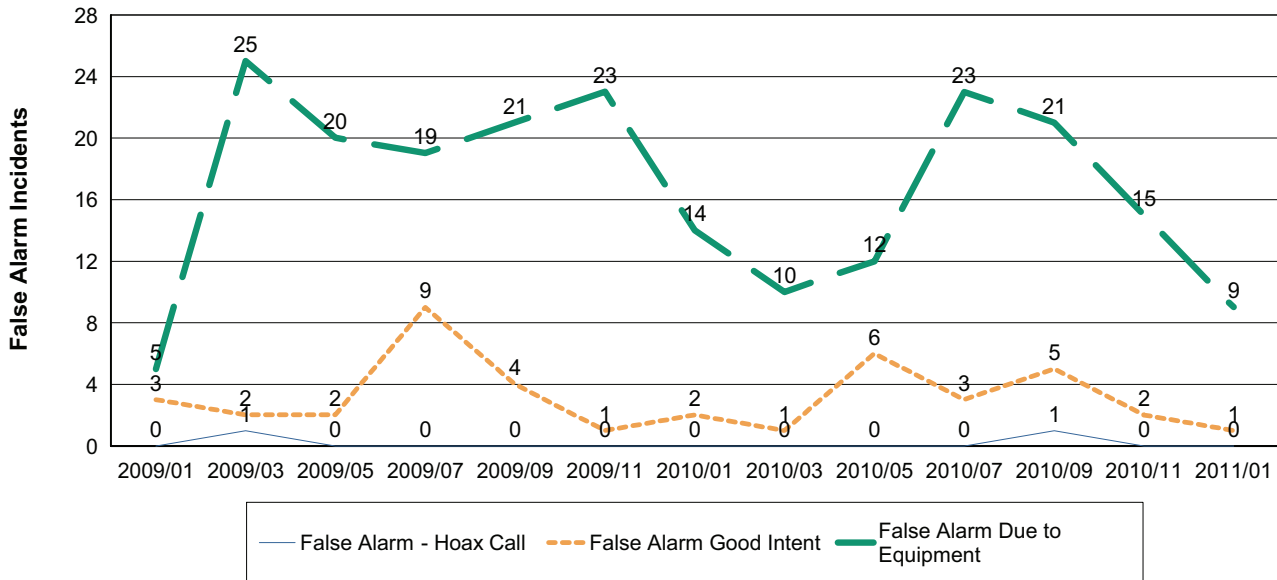
Fires by Cause



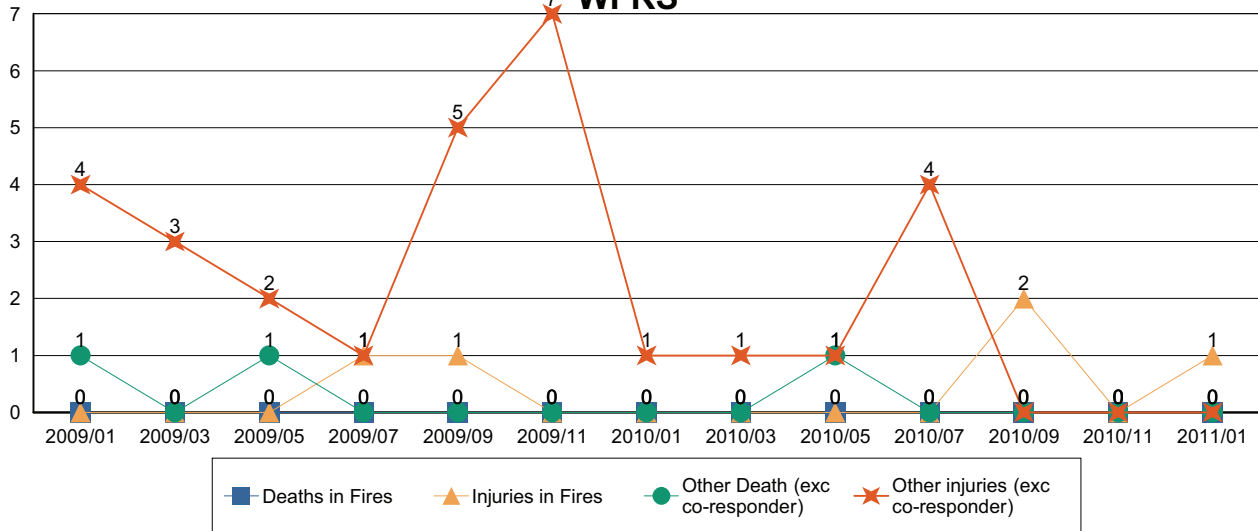
Non-Fire incidents attended by WFRS



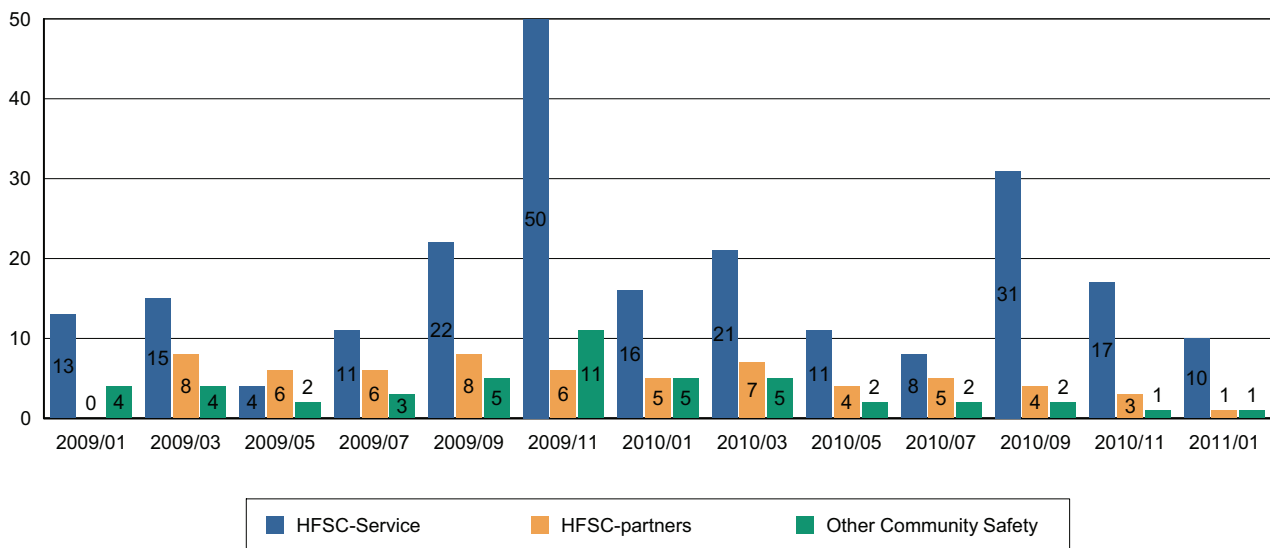
Number of False Alarm Incidents



Death & Injuries in incidents attended by WFRS



Home Fire Safety Checks and other domestic safety



Comments and Interventions overleaf

NHS Update – February 2011

Health and Social Care Bill sets out way forward for the NHS

Plans to put patients at the heart of the NHS have been set out in the Health and Social Care Bill 2011, published by the Government in January.

The proposed changes are intended to deliver better care, more choice and improved outcomes for patients, as well as long term financial savings for the NHS.

The Bill includes proposals to:

- Bring commissioning closer to patients by giving responsibility to GP-led groups
- Increase accountability for patients and the public by establishing HealthWatch and local wellbeing boards within local councils
- Enable all trusts to become foundation trusts and establish independent regulation of them
- Improve public health by creating Public Health England
- Reduce bureaucracy by streamlining arm's-length bodies

The changes should save more than £5 billion by 2014/15, and £1.7 billion a year after that, by changing the way the NHS delivers care, abolishing Strategic Health Authorities and Primary Care Trusts, and removing some 24,500 management posts.

For more information see: www.dh.gov.uk/healthandsocialcarebill

Five 'consortia' groups of Wiltshire GPs have made a successful application for 'Pathfinder' status.

As a big step towards delivering the plans set out in the Government's NHS White Paper Liberating the NHS: Equity and Excellence, the Pathfinder groups will test the new commissioning arrangements to ensure they are working well before more formal arrangements come into place. GPs will work with colleagues at NHS Wiltshire in shadow form to manage the budget for Wiltshire patients, purchasing services for patients direct with other NHS colleagues and local authorities. The Pathfinder status allows GPs to test out the new arrangements at an early stage before GP consortia take on statutory responsibilities from April 2013

New health facilities planned for Salisbury

Proposals for three new healthcare developments for Salisbury were unveiled at the last Salisbury Area Board. Representatives from NHS Wiltshire and three GP practices briefed local politicians and decision-makers on proposals, approved in outline by NHS Wiltshire late last year, for:

- New premises for the existing Castle Street practice on NHS owned land and for a new state-of-the-art GP practice on the site of Salisbury's Old Manor Hospital.
- Also on Wilton Road, refurbishment of the Groveley Unit, by NHS Wiltshire to accommodate services currently housed at the Central Clinic and at Salisbury Hospital.
- New Street Surgery's branch surgery at Bishopdown will not be affected by the changes and will continue to exist on its current site.

Agenda Item No.5e

- Wiltshire to accommodate services currently housed at the Central Health Clinic and at Salisbury Hospital.

The new building on the site of the Old Manor Hospital will be paid for and developed by the GP practices, and designed to provide accessible, modern facilities for patients. For patients, the new developments will mean more comfortable, accessible premises, and access to the same doctors and other staff as before. In the case of Castle Street, the new premises will still be occupied by the same, single practice – and only a couple of minutes walk away from the existing surgery.

Patients of New Street and Grove House will find the new premises on the Old Manor site a welcome upgrade from the existing surgeries – fully accessible for patients with disabilities, with better car parking and access by bus. Otherwise, however, they will experience the same, personal service from the two practices.

You're Welcome at St Laurence School

St Laurence School in Bradford on Avon has celebrated achieving "You're Welcome" status and is the first school in Wiltshire to do so.

You're Welcome is a robust national audit supported by the NHS to ensure that the health services provided for young people are friendly, relevant, confidential and totally supportive.

St Laurence School, together with its extended services staff, are dedicated to supporting their students' health and wellbeing, enabling them to access help to support their emotional and mental well being, their relationships and sexual health as well as drug and alcohol issues when needed. Staff work closely with partners and are able to signpost to additional specialist support when required.

To achieve the You're Welcome award the school had to demonstrate how the staff have engaged with young people to help develop, monitor and evaluate the services offered. St Laurence has embraced this challenge, constantly consulting the pupils and proactively seeking their involvement to make decisions about aspects of the service, such as where the multi agency drop-in should be located and what sort of venue it should be.

The next Board meeting of NHS Wiltshire will be held on **Wednesday 16 March at 10am - 2011 at Southgate House**. Members of the public are welcome to attend.

Papers are published a week before the meeting on www.wiltshire.nhs.uk or on request from Stacey Saunders, NHS Wiltshire (tel: 01380 733839, email: stacey.saunders@wiltshire.nhs.uk). For further information or copies of documents referred to above, please contact Jo Howes, Community Engagement Manager, 01380 733929 or jo.howes@wiltshire.nhs

Young People's Special Area Board

Feedback on Funding Awarded in Sept 2010

The Melksham area board held a special meeting on 8 Sept 2010 where young people put forward their ideas to solve transport and access issues. The projects were then voted on by attendees at the meeting to award the funding.

Project Parkour (£816)

This project was to provide a training day at Christie Miller sports centre. The training was conducted by London based parkour coaches. Parkour is an athletic discipline, in which participants traverse any environment in the most efficient way possible using their physical abilities, and which commonly involves running, jumping, vaulting, rolling and other similar physical movements.

40 young people attended project Parkour on Saturday 20th November 2010 and a group of young men, originally met through street based youth work have worked to make it happen.

Costs:

Hire of Christy Miller = £179.80
 Parkour Generations Coach = 606.30
 Refreshments on the day = £40
 Total Cost = £826.00

Melksham Parkour
 and
 Canberra Youth Centre

SATURDAY 20TH NOVEMBER

CHRISTIE MILLER
2PM - 7PM



Melksham Parkour have been working with Canberra to bring you a Parkour training day with top practitioners from Parkour Generations for

FREE

10

Bus Information Cards (£500)

The project was to provide a credit card size bus fare information card. This would provide with information that sets out the cost of a single and return for First and Fare Saver coaches to most popular local destinations. By having this card young people would know how much the fare would cost and if they had been over-charged. The cards would be printed on both sides and made of plastic.

Young people are currently creating designs. This is being organised over the Canberra Ufi Facebook page and will vote on one to proceed to print.

High Ropes Courses (£875)

This project is to pay for three high rope courses at the Braeside tree top assault course. This aims to give young people a fun day out and improve their confidence. The price includes the cost of the mini bus driver, it was hoped that a free mini bus would be used.

These courses are planned for 25 February, 13 March and 19 March 2011. There will be 12 young people on each trip, so 36 young people in total will be enabled to do the high ropes course. The courses will be supported by two youth work staff and the mini bus is part of the free mini bus money awarded.

14 year old male: "Can't wait to go high ropes will be awesome!"

Minibus Hire (£818)

To hire a mini bus to take young people on day trips.

- Centre Parcs – Away Day = £135 and 18 young people.
- Centre Parcs – Guys away day = £135 and 12 young people.
- Bristol Cribbs Causeway – Shopping and Ice Skating at the Winter Wonderland = £149 and 18 young people.
- Westbury White Horse - Power Kiting = £72 and 12 young people.
- M4 Karting – Go Karting = £67.50 and 15 young people.
- Braeside – High Ropes 25 Feb 2011 = £58.50 and 12 young people.
- Braeside – High Ropes 13 Mar 2011 = £58.50 and 12 young people.
- Braeside – High Ropes 19 Mar 2011 = £58.50 and 12 young people.



Therefore £734 of the £818 has been spent, leaving £84 to go towards transport for a March trip. Young people have suggested the following places; splash down – poole, shopping – Cabot Circus, Swindon – Cinema.

M4 Karting – Go Karting for 15 young people

Subsidised Bus Fairs (£1000)

The aim of the this project was to negotiate reduced bus fares during the October 2010 half term to enable young people within the Melksham community area to travel to Bath, Swindon and Trowbridge at a discounted price using First buses. Unfortunately First Buses were not interested in this offer. It has been decided to return the funding to for the area board to allocate to other Melksham young people's projects. 15 year old female: "This was a great idea, I'm gutted First won't go for it. Would have made half term way more interesting!"

Club Boom visits (£1050)

The hire of Club Boom, a soft play area at Bowerhill, Melksham. This included bucking bronco, surf board, gladiators, laser and disco zones. Six events were planned for two hours. Boomerang events have been held on the following dates with male and female attendances included:

Total of young people who have attended so far = 309 (as of 18.02.2011)

Date	Males	Females	Total
Monday 13 th December 2010	36	29	65
Thursday 20 th January 2011	41	31	72
Sunday 6 th February 2011	48	28	76
Thursday 10 th February 2011	53	43	96
Monday 21 st February 2011	tbc	tbc	tbc
Sunday 20 th March 2011	tbc	tbc	tbc

WILTSHIRE COUNCIL

Agenda Item No.10

MELKSHAM AREA BOARD

9 March 2011

COMMUNITY AREA TRANSPORT GROUP

1. Purpose of the Report

To provide recommendations from the meeting of the Community Area Transport Group held on Mon 21 February 2011. The purpose of this meeting was to recommend the allocation of funding to schemes prioritised by the group in October 2010.

The attendees of the working group were as follows:-

- Jonathon Seed, Wiltshire Councillor, Chairman
- Jon Hubbard, Wiltshire Councillor
- Colin Goodhind, Melksham CAP
- Rolf Brindle, Melksham Without PC
- Charles Boyle, Atworth PC
- Alan Baines, Melksham Without PC
- Mark Stansby, Wiltshire Council
- Spencer Drinkwater, Wiltshire Council
- Peter Hanson, Wiltshire Council
- Abbi Gutierrez, Wiltshire Council

Apologies –

- Graham Ellis, Melksham Chamber of Commerce
- Bill Parks, Wiltshire Council
- Eddy Watts, Climate Friendly Melksham

2. Background

Wiltshire Council Highways department receives hundred of requests every year for small traffic schemes such as traffic calming, zebra crossings and footpath widening.

In the past, these schemes were scored centrally by Wiltshire Council officers according to a scheme assessment framework laid out in the Wiltshire Local Transport Plan 2006/07 – 2010/11.

Since the introduction of the area boards, the cabinet member for Highways has been working with Wiltshire Council officers to develop a process in which Area Boards can be more involved in the prioritisation of the schemes that have been submitted to the Highways Department over the last five years. This has resulted in

community representatives being given the opportunity to prioritise and contribute information on local schemes through a new Melksham Community Area Transport Group.

In the Melksham area, each parish council was invited to nominate a representative to sit on the Community Area Transport Group.

The group met for the first time in October 2010 to discuss the requests for transport schemes submitted to date. In addition, the group prioritised local requests for new grit bins and dropped kerbs.

Officers explained that the work of the Highways Department was divided into four areas:

1. Major Schemes (schemes costing more than 5 million pounds)
2. Road maintenance (resurfacing/ line work etc)
3. Structural maintenance (bridges etc)
4. Integrated Transport

Schemes requested by local people come under 'Integrated Transport'. This area of work also includes all road safety schemes, safe routes to school, traffic management, pedestrian schemes, and public transport and cycle schemes. The total 2009/10 budget for all of these schemes across the county is £3.3 million.

3. Main Considerations

The remit of the Community Area Transport Group is to look specifically at requests for schemes which have been requested by local people and which aim to make it easier for pedestrians and cyclists to travel around the community area. A discretionary highways budget of £250,000 has been set aside for area boards to deliver schemes requested by the community. The allocation for the Melksham Community Area is £13,000.

The group were advised that this funding was available for small-scale capital highways projects and that the funding could not be used for maintenance or bus services. It was also noted that all projects require feasibility studies to look at potential solutions.

The Area Board now needs to endorse these recommendations before officers can progress the priorities put forward by the group.

4. Environmental Impact of the Proposals

There is no environmental impact at this time as there will only be initial assessments and feasibility studies.

5. Financial Implications

There will be officer time involved in visiting the priority sites and undertaking preliminary work to determine the level of intervention required. The Area Board has £13,000 which can be used towards feasibility work and the Community Area

Transport Group recommends that this sum be used for feasibility studies following the more detailed assessment.

6. Legal Implications

There are no legal implications.

7. HR Implications

There are no HR implications.

8. Equality and Diversity Implications

Some of the schemes, if they get to implementation, will support people with mobility impairment.

9. Recommendations

Transport Schemes

Five schemes were prioritised for delivery by the CATG. These are:

- i. Bath Rd - pedestrian crossing
- ii. Queensway, Pembroke Rd - pedestrian crossing
- iii. Incomplete crossing at Atworth
- iv. Spout lane lay-by, Seend
- v. Whitley footway improvements

It was agreed that the Spout Lane scheme be removed as almost delivered and that the Atworth scheme be withdrawn as the Transport budget had taken on the completion of that scheme. It was resolved to recommend to the Board that these schemes remain the priorities of the Board and CATG unless and until they decide otherwise.

The previous list of schemes for Area Transport consideration would be reconsidered after investigation at the next meeting and the new list would similarly be looked at into when the priority schemes have been completed, unless the Board decides otherwise.

A total of 40 requests for small scale traffic schemes had been put forward in the Melksham Community Area. Following discussion from the Community Area Transport Group it is recommended that:

- i). **£2000** is allocated to survey work for footways extension and pedestrian island in Bath Rd.
- ii) **£2000** is allocated to survey work for a zebra crossing in Pembroke Rd, Queensway.
- iii) **£3000** is allocated to the Spout Lane lay-by in Seend.

This would leave £6000 remaining in the CATG budget to be carried forward to 2011/12.

Report Author: Abbi Gutierrez, Melksham Community Area Manager
Tel No: 01225 718443
E-Mail: abbi.gutierrez@wiltshire.gov.uk

No unpublished documents have been relied upon in the preparation of this report

Report to	Melksham Area Board	Agenda Item No.12
Date of Meeting	9 March 2011	
Title of Report	Community Area Grants	

Purpose of Report

To ask Councillors to consider 9 applications seeking 2010/2011 Community Area Grant Funding:

1. **Seend Parochial Church Council** have applied for a grant of **£1556** towards a new printer for the Spotlight community magazine. The recommendation is to award the funding.
2. **Seend Trust & Community Centre** have applied for **£959** for good quality projection equipment. The recommendation is to award the funding.
3. **Broughton Gifford Friendship Club** have applied for a grant of **£877** for trips for isolated older people. The recommendation is to award the funding.
4. **West Wilts Interfaith Group** have applied for a grant of **£400** to hire an Indian artist and storyteller for the Melksham Festival of Food. The recommendation is to award the funding.
5. **The Keevil Society** have applied for a grant of **£999** to purchase a marquee for use in the community. The recommendation is to award the funding.
6. **Atworth Parish Council** have applied for **£900** towards redoing the stone kerbing on the village green to prevent erosion. The recommendation is to award the funding.
7. **Poulshot Village Hall** have applied for **£2490** towards the upgrading of the kitchen to facilitate meal preparation and cleaning. The recommendation is to award the funding.
8. **Melksham Without PC** have applied for **£467** towards the purchase of a large screen for viewing of plans. The recommendation is to award the funding.
9. **Bowerhill Residents Action Group** have applied for **£500** towards an information board and details of circular walks in the new picnic area. The recommendation is to award the funding.

1. Background

- 1.1. Area Boards have authority to approve Area Grants under powers delegated to them by the Deputy Leader and Cabinet member for Community Services (27 February 2010). Under the Scheme of Delegation Area Boards must adhere to the Area Board Grants Guidance for funding.
- 1.2. In accordance with the Scheme of Delegation, any recommendation of an Area Board that is contrary to the funding criteria would need the approval of the Leader, the appropriate Cabinet Member or the Cabinet.
- 1.3. In accordance with the Area Board Grants Guidance officers are required to provide recommendations in their report, however, the decision to support applications and to what level is made by Wiltshire Councillors on this Area Board.
- 1.4. EXAMPLE Two applicants withdrew their applications and hope to reapply at a future date. One application did not meet the funding criteria and was referred to Charities Information Bureau (CIB) for support to seek funding from elsewhere. CIB work on behalf of Wiltshire Council to support community and voluntary groups, town and parish councils to seek funding for community projects and schemes both from the Area Board and other local and national funding sources.
- 1.5. Funding applications will be considered at every other Area Board meeting.
- 1.6. Melksham Area Board has been allocated a 2010/2011 budget of £49,762 for community grants, community partnership core funding and councillor led initiatives. The carry forward from the 2009/2010 budget is £1,783. This leaves a total budget of £51,545 for the 2010/2011 budget.
- 1.7. A decision has been made in 2010/2011 that paper copies of funding applications will no longer appear as part of the agenda in an attempt to reduce volume of paper used. However, the application forms will be available on the Wiltshire Council web site and hard copies available upon request.
- 1.8. The 2010/2011 funding criteria and application forms are available on the council's website (www.wiltshire.gov.uk/areaboards) or paper versions are available from the Community Area Manager.

Background documents used in the preparation of this Report	<ul style="list-style-type: none">• Community Area Grant Application Pack 20010/11• Melksham Community Strategy• Grant applications
--------------------------------------------------------------------	---------------------------------------------------------------------------------------------------------------------------------------------------------------------

2. Main Considerations

- 2.1. Councillors will need to be satisfied that grants awarded in the 2010/11 year are made to projects that can realistically proceed within a year of the award being made.
- 2.2. This will be the final round of funding during 2010/11.

3. Environmental & Community Implications

Community Area Grants will contribute to the continuance and/or improvement of cultural, social and community activity and wellbeing in the community area, the extent and specifics of which will be dependent upon the individual project.

4. Financial Implications

- 4.1. Awards must fall within the Area Boards budget allocated to the Melksham Area Board.
- 4.2. If grants are awarded in line with officer recommendations, Melksham Area Board will have a balance of **£7535**

5. Legal Implications

- 5.1. There are no specific Legal implications related to this report.

6. HR Implications

- 6.1. There are no specific HR implications related to this report.

7. Equality and Inclusion Implications

- 7.1. Community Area Grants give all local community and voluntary groups, Town and Parish Councils an equal opportunity to receive funding towards community based projects and schemes.
- 7.2. Implications relating to individual grant applications are outlined within section 8 – “Officer Recommendations”.

8. Officer recommendations

Ref	Applicant	Project proposal	Funding requested
8.1	Seend Parochial Church Council	Purchase of a new printer for the Spotlight community magazine	£1556

- 8.1.1. This application was considered by councillors at the area board on 1 December 2010. The funding was not awarded as they wanted to look at a cheaper solution. Recommendation is to award the funding.
- 8.1.2. Application meets grant criteria 2010/11.
- 8.1.3. This application demonstrates a link to the Melksham community plan in terms of 'coordinating information for local people'.
- 8.1.4. Locally agreed priorities: spotlight supporting Big Society.
- 8.1.5. The applicant is a not for profit organisation.
- 8.1.6. SPPC are looking to fund a new printer as the current one is becoming increasingly unreliable and difficult to maintain. It is used to print the community magazine, which is edited and printed by volunteers. Over 700 copies are distributed to all homes in Seend and Bulkington 10 times a year. The printer that they would like is a DEVELOP INEO+35. This new printer will increase the print quality and also save volunteers time as it will print in sets so little collating is required.
- 8.1.7. No equality and inclusion issues are addressed by this project.
- 8.1.8. If the area board does not grant funding the group would attempt to raise funding from other sources.

Ref	Applicant	Project proposal	Funding requested
8.2.	Seend Trust & Community Centre	Good quality projection equipment	£959

- 8.2.1. Recommendation is to award the funding.
- 8.2.2. Application meets grant criteria 2010/11
- 8.2.3. Current community plan is not applicable to Seend.

- 8.2.4. Locally agreed priorities: Seend Parish Council's aim to extend community enhancement.
- 8.2.5. The applicant is a not for profit organisation.
- 8.2.6. This project is to install high quality projection equipment to allow the main hall to be used for films and other visual material. Requests have been received from existing user groups and people with new ideas for events and activities, and from community and local government bodies. The project will open opportunities for many more people to participate in community activities in an enhanced village venue. Also, the Community Centre, which is a charity, relies on income from hiring out its facilities, so having more to offer to potential hirers will benefit all users of the Centre in the long term
- 8.2.7. Equality and inclusion issues addressed by this project: none
- 8.2.8. If the area board does not grant funding project would be delayed until alternative funding could be found.

Ref	Applicant	Project proposal	Funding requested
8.3.	Broughton Gifford Friendship Club	Trips for isolated older people	£877

- 8.3.1. Recommendation is to award the funding.
- 8.3.2. Application meets grant criteria 2010/11
- 8.3.3. The application demonstrates a link to the Community Plan: reducing disadvantage and inequalities.
- 8.3.4. Locally agreed priorities: none
- 8.3.6. The applicant is a local community group.
- 8.3.7. This project is to take members on an outing by community transport to Bishops Lydiard to travel on Steam Train to Minehead and return. Many of their members are widows/ers and the monthly meetings are the only opportunity to socialise. Lonliness and isolation have been highlighted in many pieces of research in rural communities. Some members are living on very low incomes and not necessarily supported by local public services.
- 8.3.8. Equality and inclusion issues: the project seeks to improve the quality of life of isolated older people some of whom as mobility difficulties.
- 8.3.9. If the area board does not grant funding then some of the members would be excluded from the trip.

Ref	Applicant	Project proposal	Funding requested
8.4.	West Wilts Interfaith Group	Hiring an Indian artist and storyteller for the Melksham Festival of Food.	£400

8.4.1. Recommendation is to award the funding.

8.4.2. Application meets grant criteria 2010/11

8.4.3. Link to the Community Plan: improving the cultural quality of life of residents in the area.

8.4.4. Locally agreed priorities: none

8.4.6. The applicant is a voluntary sector organisation.

8.4.7. The Group is working with different groups to hold Interfaith/intercultural stalls and organising food from different cultures at the Melksham Food and Drink Festival in 2011. This project is to hire an Indian artist and story teller to entertain children and adults alike to enhance the stall.

8.4.8. Equality and inclusion issues: raising awareness of different faiths and cultures that exist in Melksham.

8.4.9. If the area board does not grant funding then the groups would have a smaller stall which would attract less people.

Ref	Applicant	Project proposal	Funding requested
8.5.	The Keevil Society	Purchase of a marquee for use in the community.	£999

8.5.1. Recommendation is to award the funding.

8.5.2. Application meets grant criteria 2010/11

8.5.3. Link to the Community Plan: none

8.5.4. Locally agreed priorities: none

8.5.6. The applicant is a local community group.

- 8.5.7. This project is to improve activities by the many local organisations in the open air by providing a robust, weatherproof marquee. These events attract people of all ages from Keevil and surrounding villages. The marquee would be used regularly and throughout the year.
- 8.5.8. Equality and inclusion issues: none.
- 8.5.9. If the area board does not grant funding then the old, depreciated current equipment would continue to be used.

Ref	Applicant	Project proposal	Funding requested
8.6.	Atworth Parish Council	Redoing the stone kerbing on the village green to prevent erosion	£900

- 8.6.1. This application was considered by councillors at the area board on 28 July 2010. A decision on this application was deferred as highways officers had some concerns about this work being carried out. These issues have now been resolved. Recommendation is to award the funding.
- 8.6.3. Application meets grant criteria 2010/11
- 8.6.4. The application does not demonstrate a link to the Community Plan.
- 8.6.5. Locally agreed priorities: the Atworth parish plan expressed much concern over the impact of vehicle parking. This project will be a useful contribution to easing the consequences such as erosion of the green.
- 8.6.6. The applicant is a parish council.
- 8.6.7. The aim of this project is to replace stone kerbing on the village green to prevent further erosion and returning it to its previous state. The Green is used as the evacuation point for Churchfields primary school, and it also well used by parishioners as a resting point and a nearby nursery school. The Green has gradually deteriorated over several years.
- 8.6.8. No equality and inclusion issue will be addressed by this project
- 8.6.9. If the area board does not grant funding then the project will be delayed by at least 12 months.

Ref	Applicant	Project proposal	Funding requested
8.7.	Poulshot Village Hall	Upgrading the kitchen	£2490

8.7.1. Recommendation is to award the funding.

8.7.2. Application meets grant criteria 2010/11

8.7.3. Link to the Community Plan: none

8.7.4. Locally agreed priorities: Poulshot village hall held an open evening in the hall when all villagers were invited to give their opinion on what improvements were needed in the hall.

8.7.6. The applicant is a non for profit organisation.

8.7.7. This project is to upgrade the village hall kitchen to facilitate meal preparation and cleaning up.

8.7.8. Equality and inclusion issues: none.

8.7.9. If the area board does not grant funding then less improvements will be made.

Ref	Applicant	Project proposal	Funding requested
8.8.	Melksham Without PC	Purchase of large screen for viewing plans.	£467

8.8.1. Recommendation is to award the funding.

8.8.2. Application meets grant criteria 2010/11

8.8.3. Link to the Community Plan: enabling everyone to have equal access to local decision making.

8.8.4. Locally agreed priorities: updating IT equipment, using the most appropriate methods of engagement, assisting the socially deprived to engage in the planning process.

8.8.6. The applicant is a parish council.

8.8.7. This project is to purchase a large screen to facilitate the viewing of plans by councillors and the public. MWPC regularly receives consultation papers,

newsletters and planning applications (revised plans) from Wiltshire Council with no hard copies, that can only be viewed from a CD or website. Efforts to print out on A4 and enlarge sometimes results in blurred images which omit important detail (plans) ; images just made bigger, not clearer. Large consultation documents are timeconsuming and costly to print off for the Council to review. A large, central office screen would ensure that plans and other documents can be viewed properly at meetings by the Council and members of the public. The costs include a new television screen (no television licence is required as there is no TV aerial) and the necessary graphics card and computer to run the internet and software required. The new PC will also be used as the Asst Finance Officer's main PC to replace the current one which has the Windows 2000 operating system - no longer supported by Microsoft and unable to run newer programs such as anti-virus systems, and later versions of Mircosoft Office.

8.8.8. Equality and inclusion issues: facilitating access to the planning process for those without internet access.

8.8.9. If the area board does not grant funding then the project would not go ahead.

Ref	Applicant	Project proposal	Funding requested
8.9.	Bowerhill Residents Action Group	Installation of a local information board in new picnic area.	£500

8.9.1. Recommendation is to award the funding.

8.9.2. Application meets grant criteria 2010/11

8.9.3. Link to the Community Plan: increase the numbers of people walking and providing information to canal users.

8.9.4. Locally agreed priorities: none

8.9.6. The applicant is a local community group.

8.9.7. This project is to improve the picnic area and encourage more people to use it. At the opening of the picnic bench project many people said they could not find the way to the canal path as there was only one sign in Bowerhill and that didn't provide enough information. Wiltshire Council's Path Information Grant Scheme, Melksham Without Parish Council and the Residents Action Group agreed to finance improvements to the permissive footpath from Brabazon Way to the canal and pay for some signposts to the canal from Bowerhill. BRAG want to take this further with more signposts and the publicising of a circular route from Brabazon Way, through Giles Wood to the canal then back to the bridle path and back to Bowerhill.

8.9.8. Equality and inclusion issues: none

8.9.9. If the area board does not grant funding then the project would not go ahead until another source of funding could be found.

Appendices:	Appendix 1 Grant application – Seend Parochial Church Council Appendix 2 Grant application – Seend Trust and Community Centre Appendix 3 Grant application – Broughton Gifford Friendship Club Appendix 4 Grant application – West Wilts Interfaith Group Appendix 5 Grant application – Keevil Society Appendix 6 Grant application – Atworth Parish Council Appendix 7 Grant application – Poulshot Village Hall Appendix 8 Grant application – Melksham Without PC Appendix 9 Grant application – Bowerhill Residents Action Group
--------------------	------------------------------------------------------------------------------------------------------------------------------------------------------------------------------------------------------------------------------------------------------------------------------------------------------------------------------------------------------------------------------------------------------------------------------------------------------------------------------------------------------------------------------------------------------------------------------------------------------------------------------

No unpublished documents have been relied upon in the preparation of this report.

Report Author	Abbi Gutierrez, Community Area Manager Tel: 01225 718443 E-mail: abbi.gutierrez@wiltshire.gov.uk
----------------------	-------------------------------------------------------------------------------------------------------------------------------------------------------------



Area Board Project
1. What is the Initiative?
Pipe and fill in ditch at side of road, make a lay-by for car parking and allow free flow of traffic along Spout Lane, Sells Green, Seend
2. Where is the initiative taking place?
Spout Lane, Sells Green, Seend
3. When will the initiative take place?
The work has been picked up by the Highways Drainage Team and has already started
4. What are the Community benefits/evidence of need/links to Community Plan/Community Issue?
<p>For many years Spout Lane has become a difficult and narrow route due to car parking for Canal and local use. This has been exacerbated by the use of satellite navigation systems which make Spout Lane a through route. In recent months large vehicles, including a fire engine have found passage along Spout Lane almost impossible due to car parking difficulties.</p> <p>Road and pavement maintenance backlog and improving the condition and cleanliness of roads and pavements is a top public priority in Seend. Parishioners in this area of Seend have raised the issue of car parking, safety for walkers, access through the lane and to the K & A Canal over several years.</p> <p>The Melksham Area Transport Committee has made this work one of the top four priorities in the Area and this was supported by the Area Board.</p>
5. What is the desired outcome of this initiative?
By improving the state of the lane, and providing improved car parking, access for large vehicles and safety for walkers in this area will be greatly improved. The area is close by a popular canal-side pub, a caravan and camping site and has access onto the K & A Canal. It will also provide better access for emergency vehicles.
6. Who will Project Manage this initiative?
Danny Everett, Highways Officer, Wiltshire Council
7. Costs/quotes/ match funding? (total cost £5k require 1 quote, total cost £5k-25k require 3 quotes)
Wiltshire Council is using its own drainage gangs for this work at agreed matrix costs for plant machinery and materials. These costs are significantly less than Mouchel matrix costs which make the project feasible. An estimate from Mr Everett is attached. The Community

contribution to assist and replenish the Drainage Budget is £3000 from Seend Parish Council (which has been agreed), £3000 from the Area Transport Grant (to be discussed at the Area Transport Meeting on 21st February) and £3000 is requested as a Councillor Initiated Project Grant by Councillor Seed as the Local member.

8. Additional information

This project is supported by the Area Highways Manager but the Transport Department is unable to prioritise the funding of this project, when compared against other priorities, without a significant Community Contribution. This has been negotiated by Councillor Seed in order to drive this project to fruition.



Area Board Project

1. What is the Initiative?

Positive Parenting Programme. To fund 3 parenting programmes delivered by the Parent Support Advisors for up to 16 parents in each course (maximum total of 48 parents) of children at school in the Melksham cluster of schools.

2. Where is the initiative taking place?

The courses would take place at Christie Miller Sports Centre

3. When will the initiative take place?

These courses would take place in May– July 2011, Oct – Nov, 2011, Feb – Mar 2012.

4. What are the Community benefits/evidence of need/links to Community Plan/Community Issue?

Positive parenting has a massive impact on the lives of children and families.

The Parent Support Advisors give a lot of 1:1 support and advice to parents about parenting tips and suggestions re behaviour, boundaries, discipline, communication, relationships, etc.

Parents who have been through the Positive Parenting Programme have given overwhelmingly positive feedback re the usefulness of the course. This is largely due to the professionalism and personable approach the PSAs have brought to the delivery of the programme.

Children who have the proper support from their parents do better at school, are happier at home and school because of their improved relationships with their parents. Many of the parents who have already been through the programme have attended because they have been 'at their wit's end' and not known where to turn for support in dealing with their children. This programme has and will continue to make the difference to parents now and to children now and into their futures.

Extended Services funding cannot sustain these programmes and therefore without external funding they will not be able to continue.

Funding is secured for the Melksham Parent Support Advisors posts until Nov 2012. This is funded by Extended Services, for which the budget is held by Melksham Oak Community School.

The need for positive parenting has been raised to the area board as an online issue no 1480.

5. What is the desired outcome of this project?

- *Parents are 'skilled up' to better deal with their child's behaviour*
- *Parents feel more confident as parents*
- *Relationships between parents and children are improved which has significant positive impact on child's development and achievement potential*
- *Relationship between parents and school is improved due to improvements in child's behaviour*
- *Professional relationship with Parent Support Advisors developed which often leads to further support and overcoming other challenges in parents' lives.*
- *Parents have a better understanding of their child's needs*
- *Parents are able to recognise and change their actions to support their children more effectively*
- *Parents feel empowered and in control of their lives*
- *Parents feel supported by other parents, and feel that they are not alone*
- *Support groups are formed informally between participating parents to continue support*

6. Who will Project Manage this initiative?

*Jonothan Hope, Extended Services Network Co-ordinator, Melksham Oak Community School
Melksham SN12 6QZ*

7. Costs/quotes/ match funding? (total cost £5k require 1 quote, total cost £5k-25k require 3 quotes)

£ 1800.

Each course is estimated to cost £600. This excludes the PSAs time which is funded by Extended Services.

- *Christie Miller room hire: £212 for 5 sessions over 8 wks*
- *Course materials (books, sheets, etc.) £388*

These costs are based on previous costs incurred and are therefore reliable.

8. Additional information

The PSAs have already delivered 2 successful parenting courses (Triple P) in Jun – July 2010 and Oct – Nov 2010. The funding sought will continue this programme. It will pay for the hire of the space and course materials / resources.

The Triple P course is an 8 week course which includes four group sessions, 3 telephone support sessions from PSAs, and a final 8th session as a group to share learning and progress.

It is an accredited course with a proven track record – recognised and supported by Wiltshire Council Parenting Professionals, including the Children's Trust Board.

The course is evaluated and feedback collated. Parents give their honest opinions in a paper questionnaire which is entered online and into a spreadsheet.

Parent Support Advisors continue to have contact with parents who have completed the course and can gather informal feedback after the course has finished.

Agenda Item No.12b

The impact of this project will be that children's behaviour should improve and parents' confidence in parenting should improve. Parent Support Advisors will continue to monitor progress of parents informally after the programme has finished. These parents are aware that they can request support from the PSAs at any time through their school if they feel that they need it.

